

## “Severn Bridge” Main Cable Access System



The Severn Bridge engineers required a simple & effective access method enabling them to carry out main cable wrapping during initial cable dehumidifying works. After consultation with the bridges engineers' and establishing the actual project requirements' ALPS designed an access system that used the hand strand cables as primary support, this leaving clear & unloaded the main bridge suspension cable for wrapping works.

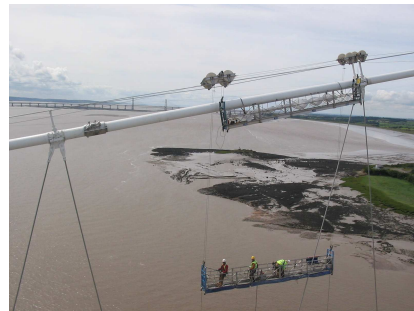
A custom travelling trolley powered the 9M access platform up the main cable at 9M/min' using a 1000Kg traction hoists protected by an over-speed secondary safety device.

The 9M working platform could be lowered to the deck at 9M/min'

using the on-board hoists' & back-up safety devices.

The traction winch used for hauling was situated some distance in front of the access system, this controlled by digitally encoded remote control.

Behind the hauling winch was a powered wire rope storage device storing up to 200M of winch wire. Both Winch & Coiler were clamped to the main cable in front of the working platform.



For manifold installation please see manifold access platform project file.



ACCESS - LIFTING - PULLING & SAFETY  
[www.alps-uk.com](http://www.alps-uk.com)